

Workhorse W20/22/24 Front UltraTracII TracBar Instructions

UTHDW22F

Tools Needed

- 1 1/8" Deep Socket 1/2"
- 15/16" Socket and wrench
- 1 1/2" socket and wrench
- Impact gun is recommended



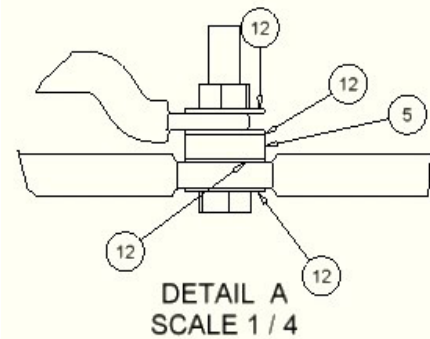
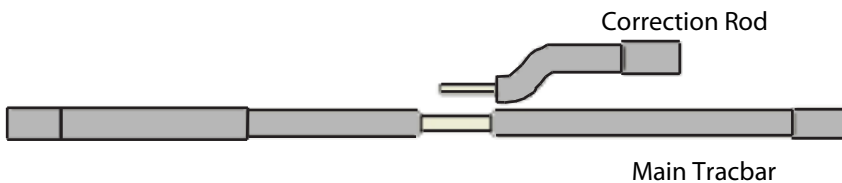
- Lay out all of the parts and familiarize yourself with all of them and make sure you have all of the parts before you begin the installation process.
- Start by making sure your coach is on flat and level ground with the wheels blocked.
- You will want to leave your coaches suspension fully loaded when doing the final install of the Tracbar.

1. Install Axle Bracket

Remove the 2 front u-bolt nuts from the driver side front axle and install the provided axle bracket (with mounting tab up and facing the Front) then reinstall washers and nuts then retorque the nuts back to factory specs. (See Fig-1)

Note: tracbar mounts on the Front side of the Front axle so make sure you mount the axle bracket facing the Front of the coach.

Fig-1



2. Install Frame Bracket

(Remove the correction rod from the main bar at this point)

Attach non-telescoping end of the main Tracbar to the axle bracket with the 5/8" x 3" bolt, locknut and washers supplied in the kit (see fig-1) (*do not tighten at this time*) make sure that the brackets don't rub or pinch any of the lines inside the frame rails.

Remove the correction rod with spacer-nut and bolt at this time. Attach the telescoping end of the Tracbar to one of the frame brackets, both frame brackets are the same. (See Fig-2) and attach to the passenger side frame rail by installing the clamp plate to the top side of the rail and installing the 5/8" x 2" bolts and lockwashers from the bottom up. *Do not tighten at this time.*

Fig-2

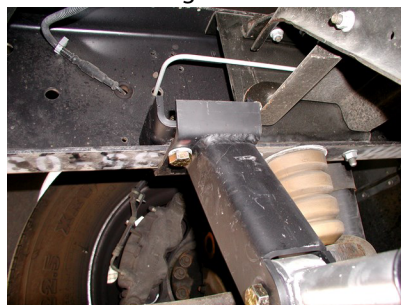


Fig-3



3. Install the Correction rod and Frame bracket

Attach the correction bar to the frame bracket and mount it to the driver side frame rail on the front side of the main Tracbar. Now attach the correction bar to the main Tracbar using the 1" bolt, nut and 3/4" spacer. (See Fig.-3) Again make sure you are clear of all lines inside of the frame rails. (When attaching the frame bracket to the correction rod make sure the bolt head of the 5/8" x 3" bolt faces away from the main bar)

4. Check Alignment and Tighten

Check to make sure that the Tracbar runs parallel to the rear axle and that the correction bar clears the bolt that mounts the Tracbar. After checking everything for clearances, tighten all fasteners and test drive, after test drive recheck all fasteners for tightness.



Install of frame bracket

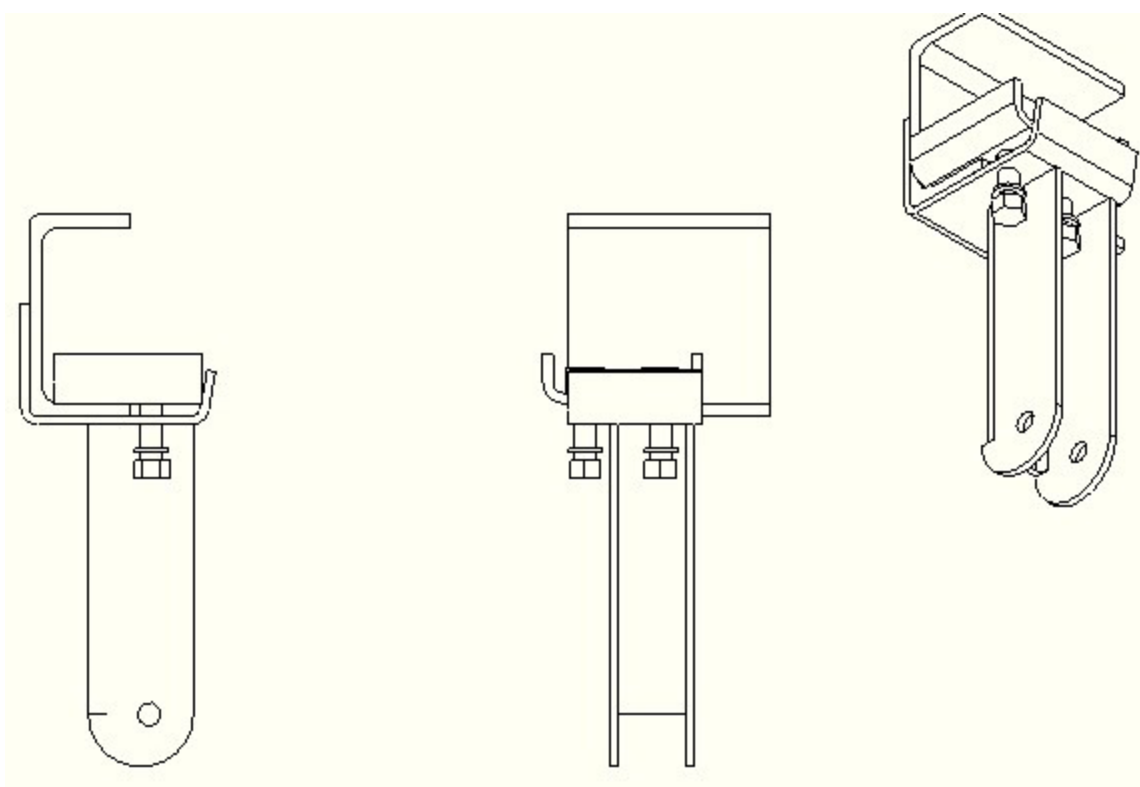
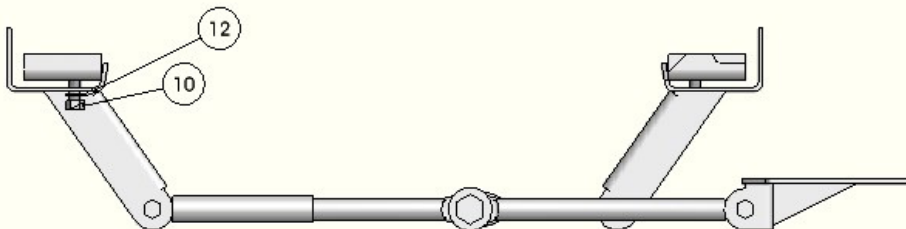
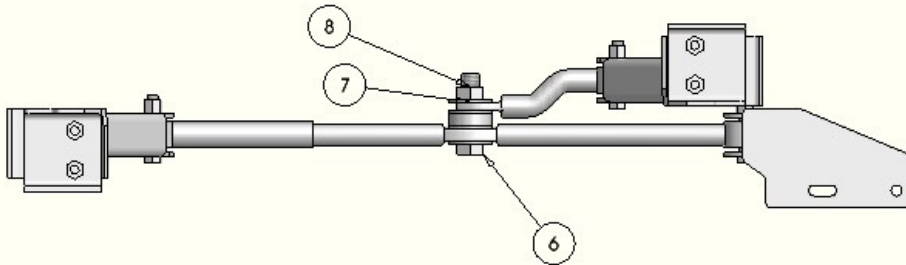
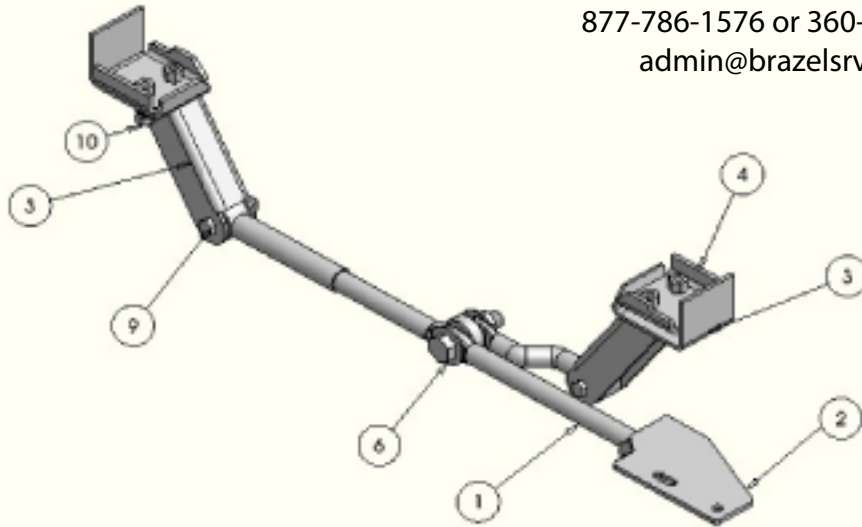


FIG	QTY	PART #	DESCRIPTION
1	1	UTHDW22F-1	TracBar
2	1	UTHDW22F-2	W22 Front Axle Bracket
3	2	UTHDW22F-3	W22 Front Frame Bracket
4	2	UTHDW22F-4	Clamp Plate
5	1	UTHDW22F-5	Spacer Block
6	1	1" x 4" Bolt	Bolt
7	4	1" Washer	1" Washer
8	1	1" Nut	1" Lock Nut
9	3	.625" x 3.5" Bolt	5/8" x 3.5 GRD 8
10	4	.625" x 2" Bolt	5/8" x 2" GRD 5
11	3	.625" Nut	5/8" Lock Nut
12	4	.625"-Lock Washer	5/8" Lock Washer



www.brazelsrv.com
"Caring Quality Service"

Brazel's RV Performance
 3912 Harrison Ave.
 Centralia, WA 98531
 877-786-1576 or 360-736-9494
 admin@brazelsrv.com



UltraTrac II®
HEAVY DUTY TRAC BAR SERIES